



HOOGENDOORN

Automatización de invernaderos

1

Erik van Berkum



JB SYSTEMS
INDUSTRIAL AUTOMATION



DATA VISION



HOOGENDOORN
IT SERVICES



HOOGENDOORN
GROWTH MANAGEMENT



JB Systems Industrial Automation



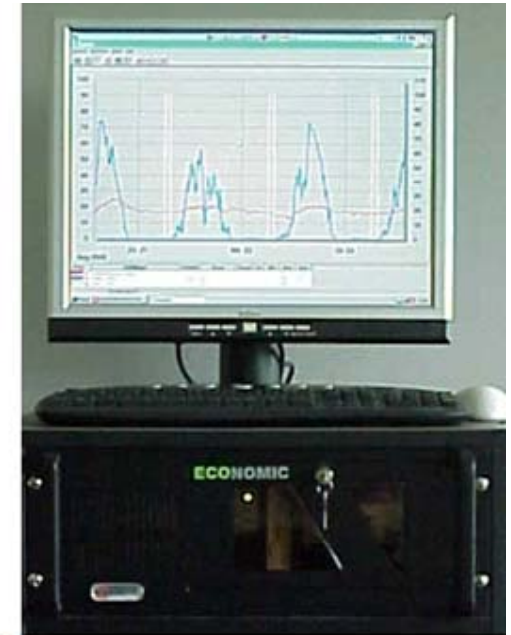
Data Vision



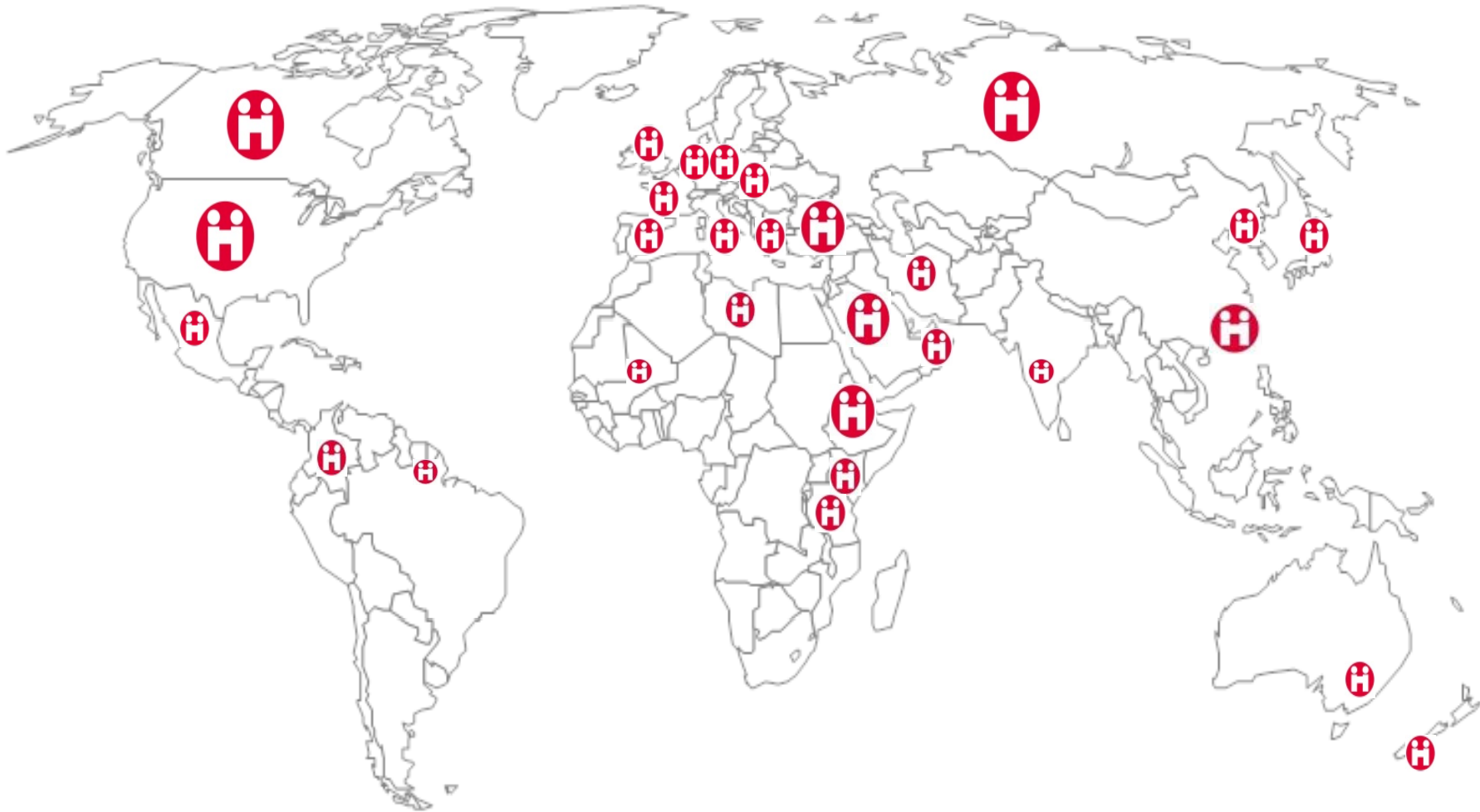
HOOGENDOORN IT Services



40 Años



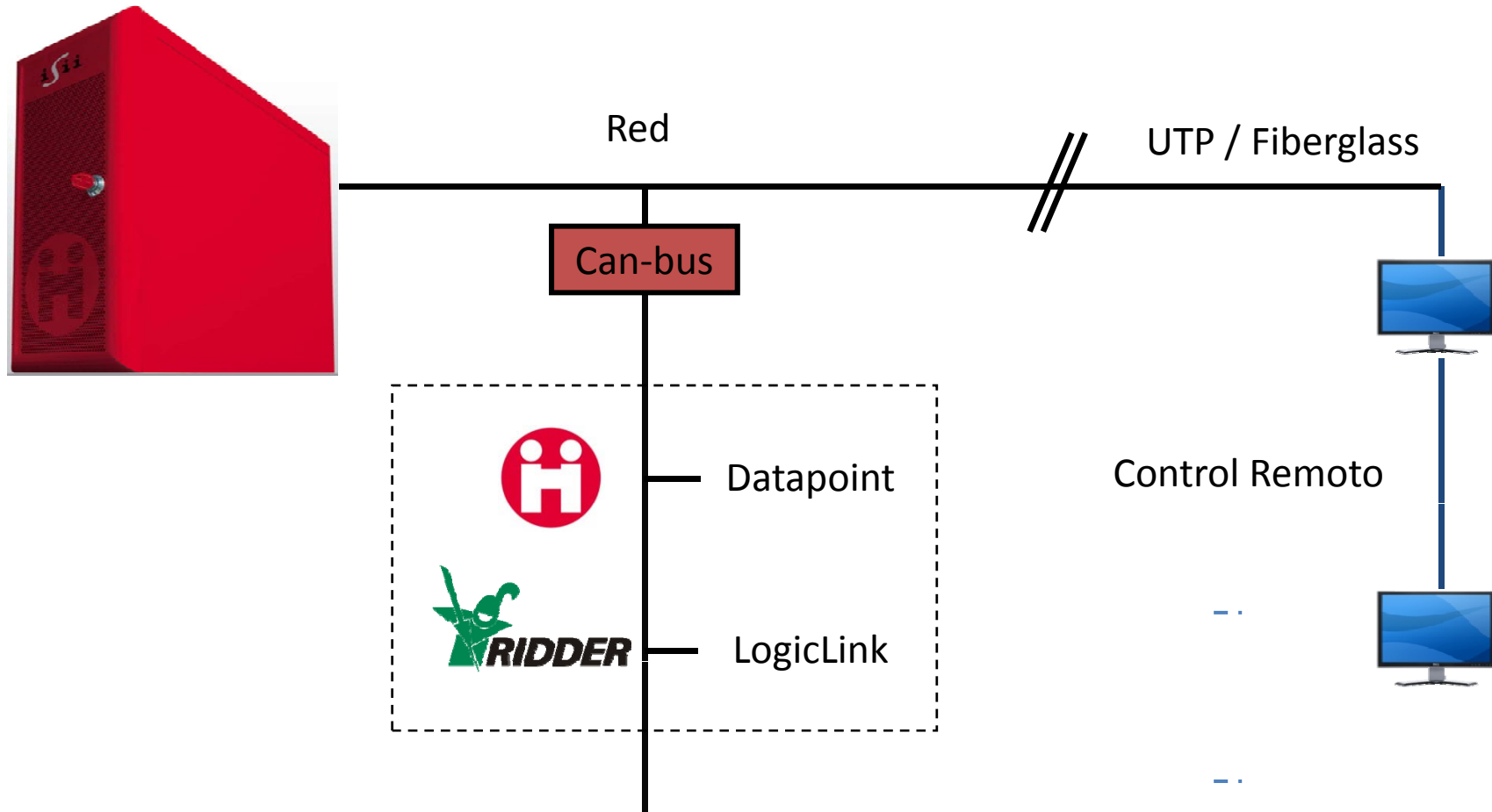
Con clientes en 40 países



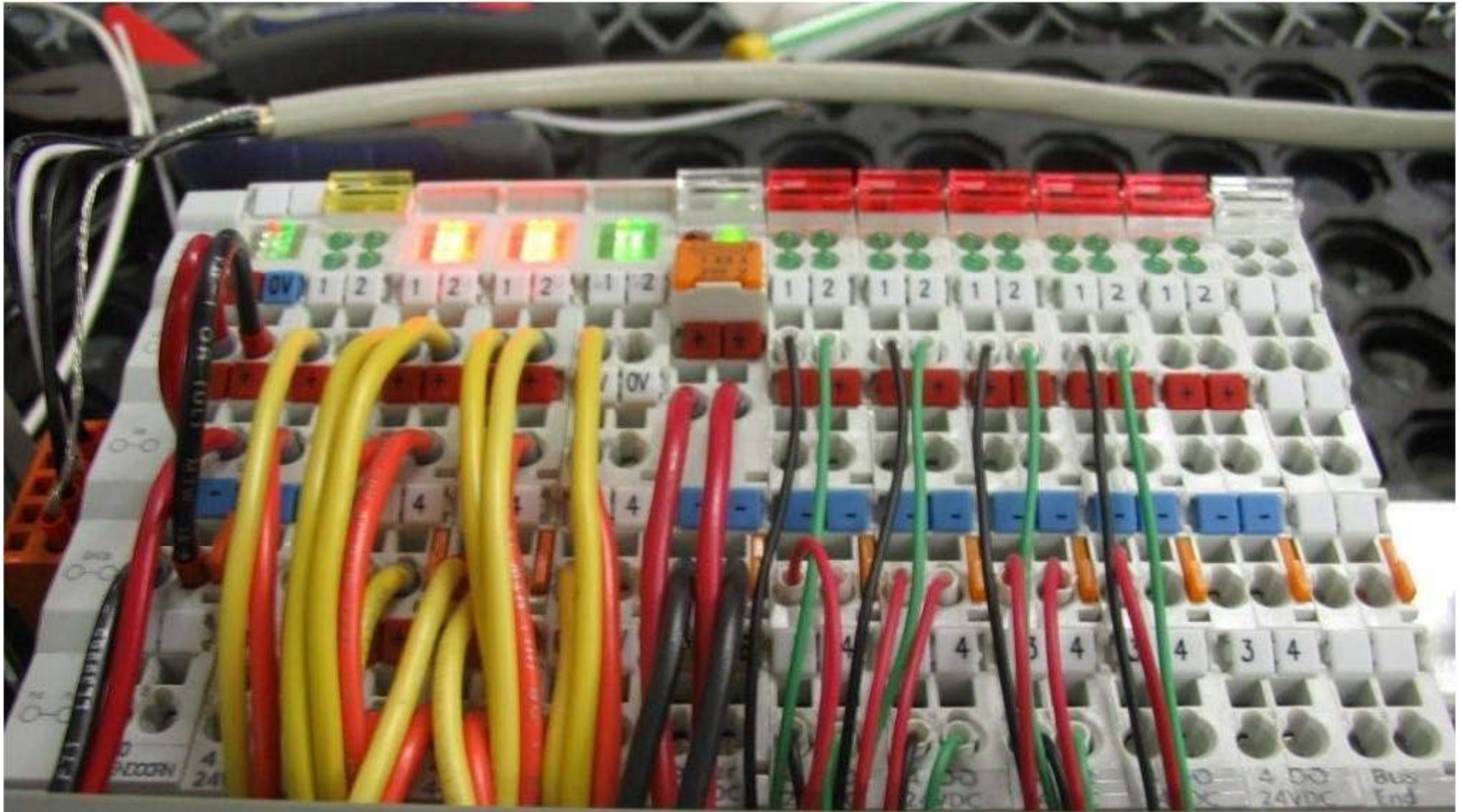
control de clima integrado



Interface Industrial



Nuestra computadora usa 1 solo cable (digital) hacia el invernadero; esto significa ahorro en cables, para el cliente.



Data Point

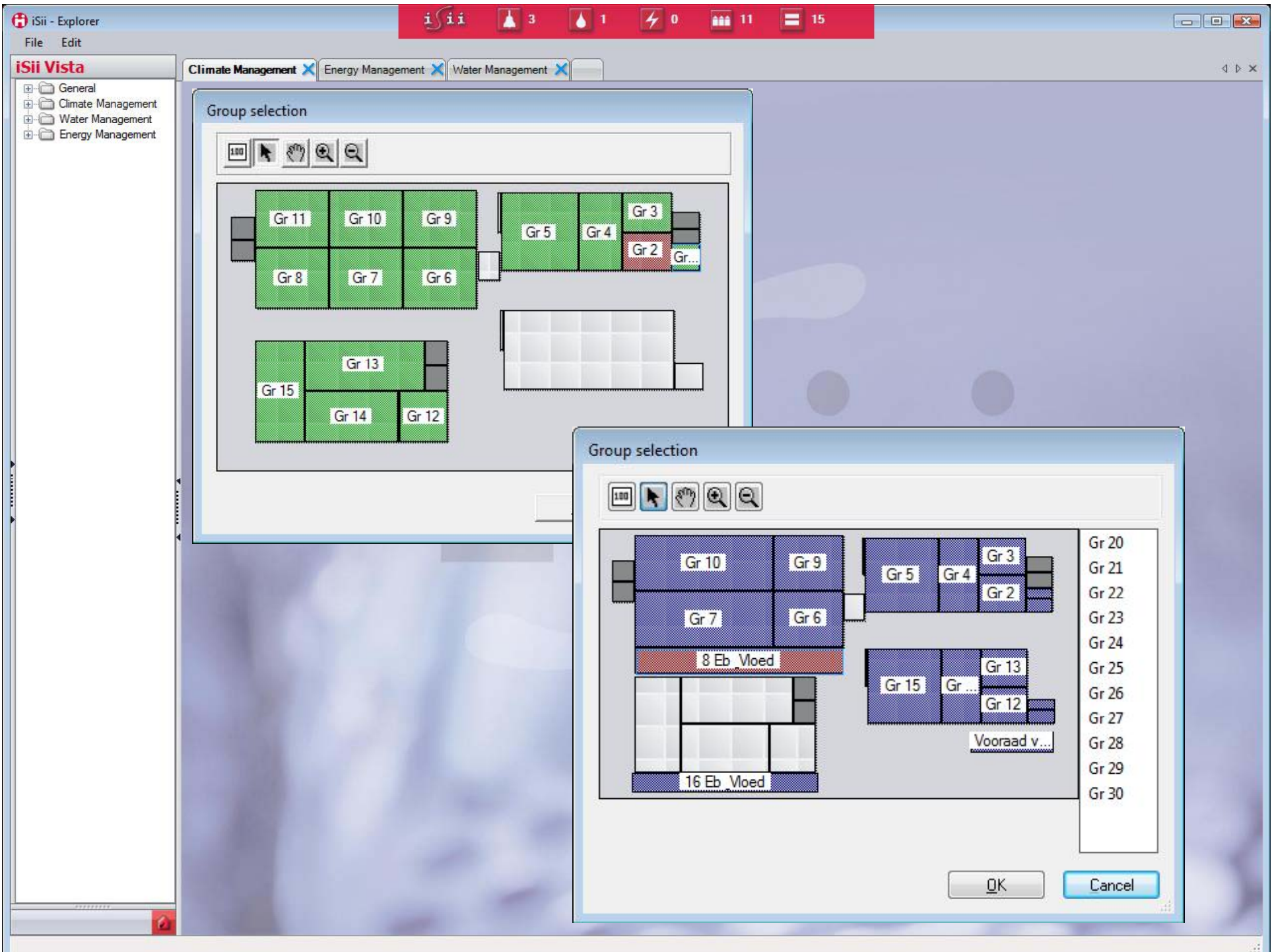
Toda la información importante
@ simple vista



Automatización Total



- Temperatura
- Cortinas
- Luz artificial
- Ventilación
- Sistema de enfriamiento
- Control de agua
- CO₂
- Fertilización
- Administración de energía



iSii - Explorer

File Edit

Climate Management X Energy Management X Visualisation Energy X Water Management X

iSii Vista - MeteoScope

Colou	Settings	Unit	Group	Factor	Axis	Min
<input checked="" type="checkbox"/>	MeteoScope: expected outside temperature	°C	Gr 0	1	<-	
<input checked="" type="checkbox"/>	MeteoScope: expected outside RH	%	Gr 0	0.1	<-	
<input checked="" type="checkbox"/>	MeteoScope: expected wind speed	m/s	Gr 0	1	<-	
<input checked="" type="checkbox"/>	MeteoScope: expected cloudiness	1/8	Gr 0	1	<-	
<input checked="" type="checkbox"/>	MeteoScope: expected radiation	W/m ²	Gr 0	0.1	<-	

For Help, press F1

iSii Vista - Meteo

Colou	Settings	Unit	Group	Factor	A
<input checked="" type="checkbox"/>	outside temperature: measurement	°C	Gr 1	1	<-
<input checked="" type="checkbox"/>	wind speed: measurement	m/s	Gr 1	1	<-
<input checked="" type="checkbox"/>	radiation: measurement	W/m ²	Gr 1	1	<-
<input checked="" type="checkbox"/>	radiation: measurement	%	Gr 1	1	<-
<input checked="" type="checkbox"/>	enthalpy meteo	kJ/kg	Gr 1	1	<-
<input checked="" type="checkbox"/>	enthalpy greenhouse	kJ/kg	Gr 1	1	<-
<input checked="" type="checkbox"/>	deviation enthalpy: greenhouse - meteo	kJ/kg	Gr 1	1	<-

For Help, press F1

iSii Vista - Teeltvak EC pH actueel

File Edit View Help

Crop Section		Gr 1	Gr 2	Gr 3	Gr 4	Gr 5	Gr 6	Gr 7	8 Eb & Vloed	Gr 9	Gr 10	Gr 11	Gr 12	Gr 13	Gr 14	Gr 15	Gr 16	Gr 17	18
crop section: status		off	off	off	off	off	off	off	off	off	off	off	off	off	off	off	off	off	
crop section: number of starts total		0	0	0	0	0	0	0	0	0	0	0	0	0	0	0	0	0	
crop section: water supply	l/m ²	0.00	0.00	0.00	0.00	0.00	0.00	0.00	0.00	0.00	0.00	0.00	0.00	0.00	0.00	0.00	0.00	0.00	
crop section: water supply	m ³	0.0	0.0	0.0	0.0	0.0	0.0	0.0	0.0	0.0	0.0	0.0	0.0	0.0	0.0	0.0	0.0	0.0	
crop section: water supply	h:m	00:00	00:00	00:00	00:00	00:00	00:00	00:00	00:00	00:00	00:00	00:00	00:00	00:00	00:00	00:00	00:00	00:00	
crop section: measurement EC in	EC																		

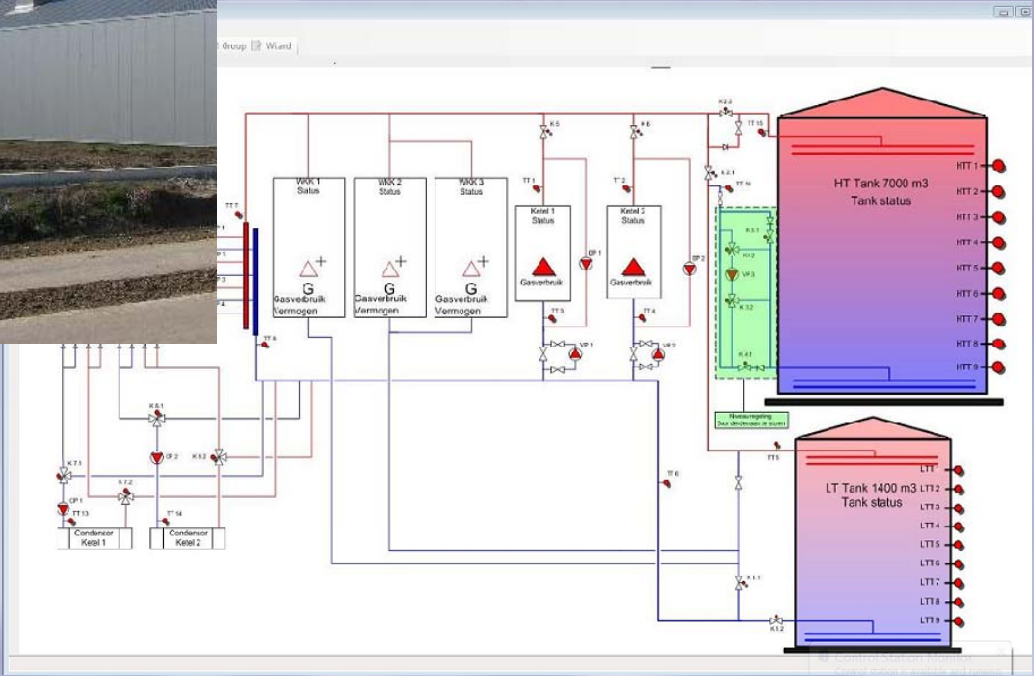
F1 Help

Visualización del sistema con tablas y abajo sus influencias

- File Edit
- Jansen
 - Aqua Balance
 - Water
 - Energie
 - Ketel
 - Gasverbruik
 - Verdeelstuk
 - Kasklimaat
 - Minimum buis
 - Ventilatie
 - Kasklimaat
 - Klimaat berekend actueel
 - Klimaat gemeten actueel
 - Klimaat meetboxen
 - Klimaat meetboxen actueel
 - Kas en teelt
 - PAR actueel
 - PAR gewas
 - PAR gewas week
 - PAR-som gewas
 - Ventilatietemperatuur luwezijde VIP
 - Ventilatietemperatuur windzijde VIP
 - Verwarming
 - Verwarmingstemperatuur VIP
 - Vocht actueel
 - Meteo
 - Gedeelde meteo
 - Klok
 - Meteo
 - Meteo actueel
 - Meteo huidig etmaal
 - Meteo periode
 - Meteo vorig etmaal
 - Meteo week
 - MeteoScope
 - Tank
 - Water
 - Energie
 - Klimaat etmaal



Se pueden insertar fotos actuales Del invernadero



- Groenewegen
- Jansen
- Rozen

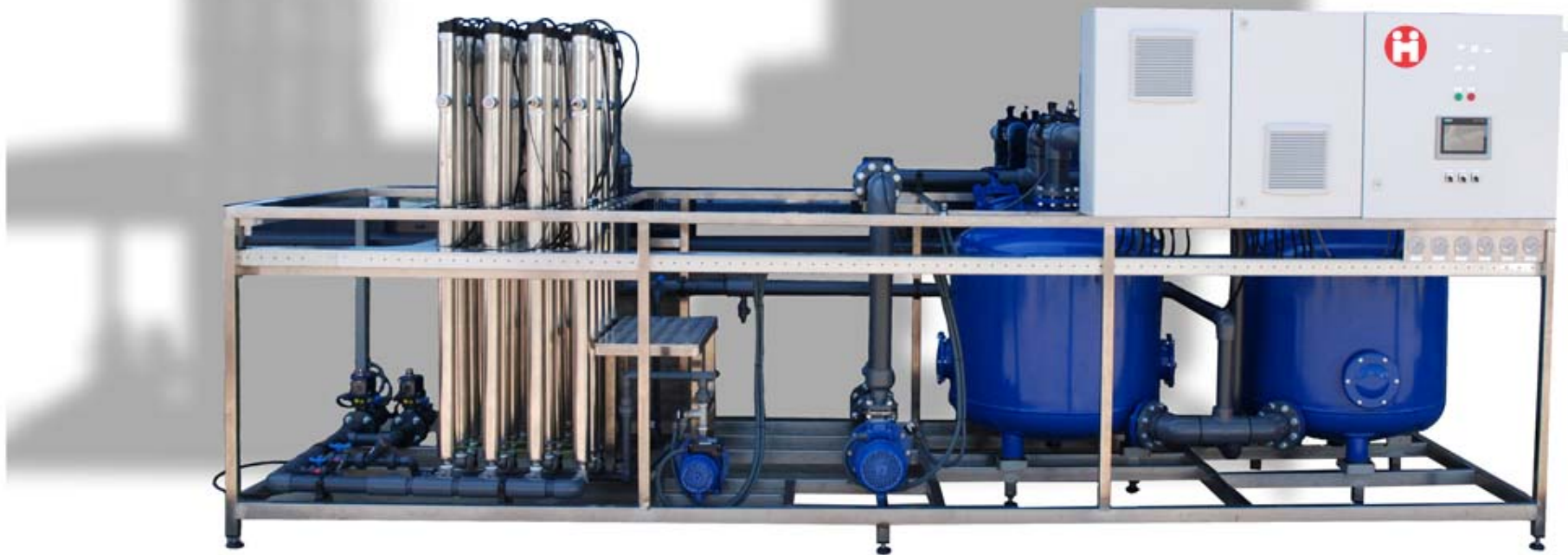


Sistema de riego

Estación de bombas



Desinfección UV



Desinfección del Ozono



Filtros



Sala de entrenamiento virtual

The screenshot shows a virtual training environment for a TO Control system. The interface is divided into several sections:

- Video Feed:** A small window in the top-left corner shows a person's face, likely the instructor or a participant.
- Feedback Panel:** A panel below the video feed contains four buttons: 'Faster' (blue), 'Slower' (green), 'Perfect' (yellow), and 'Please Review' (red).
- Chat Window:** A chat window below the feedback panel is currently empty.
- Index:** A panel at the bottom-left lists training modules with their durations:
 - Hoogendoorn Virtual traini... 00:00
 - Sharing (Rene Beerkens) 01:06
- Main Control Panel:** The central window displays the '4170 Paradijsweg (isii)' control interface. It includes a menu bar (Action, Edit, CD, Roppy, Help), a toolbar with various icons, and a settings table. The settings table is as follows:

Settings	Unit	Value
24 hour temperature: VIP	°C	19.0
length of optimization period	day(s)	2
TO Control 24 hours: type of start time	clock	
TO Control 24 hours: start time	h:m	09:30
- Right Panel:** A vertical panel on the right side contains a list of control elements and a color selection table. The color selection table is as follows:

Colou		
Red	<input checked="" type="checkbox"/>	computed 24 hour tem
Blue	<input checked="" type="checkbox"/>	computed 24 hour tem
Yellow	<input checked="" type="checkbox"/>	computed 24 hour tem
Green	<input checked="" type="checkbox"/>	computed 24 hour tem
Cyan	<input checked="" type="checkbox"/>	TO Control: deviation
Magenta	<input checked="" type="checkbox"/>	TO Control: deviation



Listo Trabajamos juntos